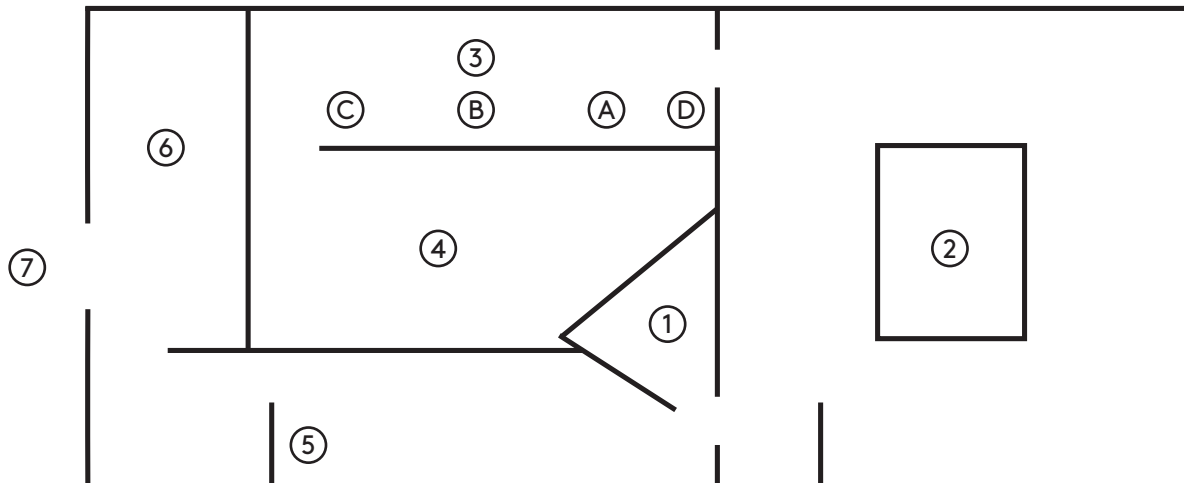
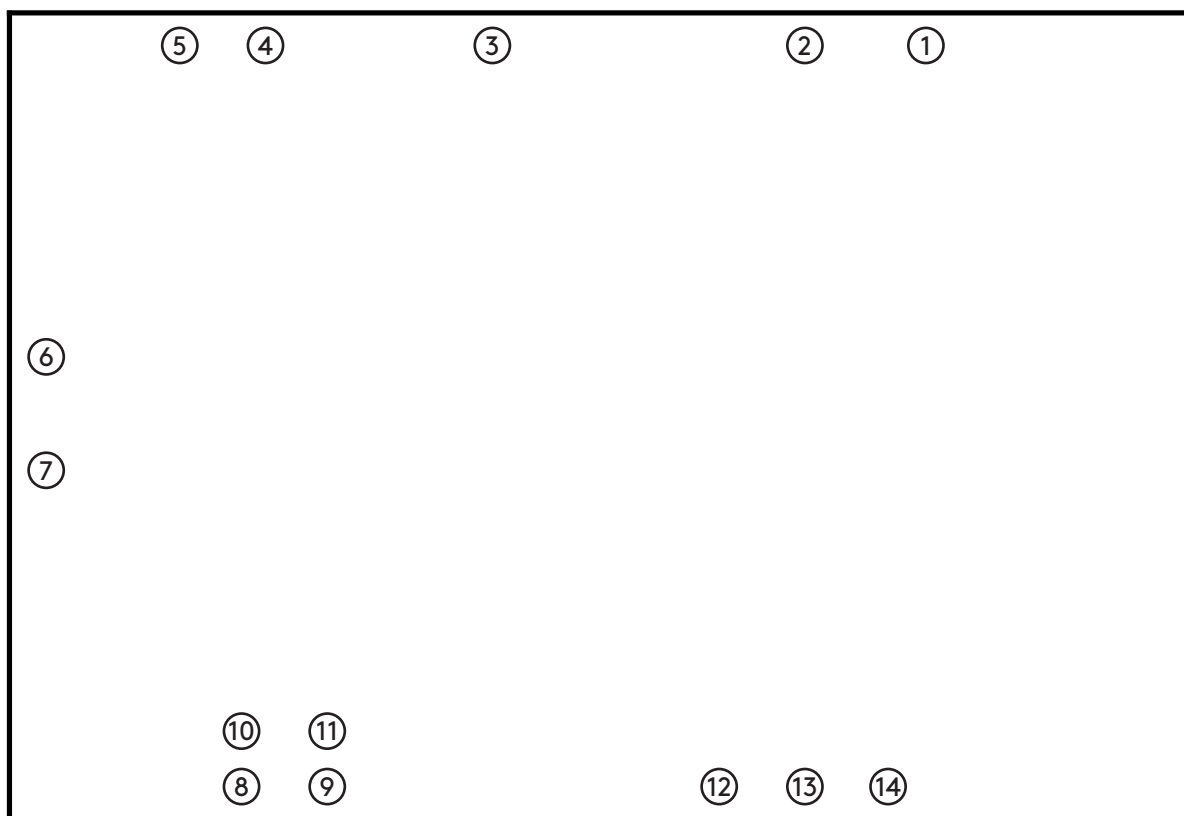


Haroon Mirza /MMMMMMMMMMMM



- ① *The national apavilion of then and now* (2011), anechoic chamber, LEDs, amp, speakers, electronic circuit
- ② *I saw square triangle sine* (2011), mixed media, including Angus Fairhurst, *Underdone Overdone Paintings* (1998)
- ③ Drawings:
 - A1 *I saw square triangle sine* (2011), drawing
 - A2 *Untitled (Early sketches for Paradise Loft)* (2009), drawing / *Untitled (Early sketches for Paradise Loft)* (2009), drawing
 - A3 *Panasonic²* (2011), schematic
 - A4 *Sanctuary* (2009), schematic (detail)
 - A5 *Tent Life* (2011), schematic
 - A6 *Paradise Loft* (2009), schematic (detail)
 - A7 *I saw square triangle sine* (2011), schematic
 - A8 *Automation is Dead* (2011), schematic
 - B1 *Acoustic Space Mirror* (2006), schematic and collage / *Sketch for Unrealised Work* (2006), schematic
 - B2 *Taka Tak* (2008), schematic
 - B3 *Taka Tak* (2008), schematic / *Taka Tak* (2008), schematic
 - B4 *Untitled* (2008), collage
 - B5 *Current Climate* (2009), schematic
 - B6 *Adhān* (2009), drawing
 - B7 *Adhān* (2009), drawing
 - B8 *Adhān* (2009), drawing
 - C1 *Acoustic Space Mirror* (2006), drawing / *Sketch for Unrealised Work* (2006), drawing
 - C2 *Sick* (2011), schematic (detail)
 - C3 *Regaining a Degree of Control* (2010), drawing / *Regaining a Degree of Control* (2010), drawing
 - C4 *Untitled Song featuring Untitled Works by James Clarkson* (2012), drawing (detail)
 - C5 *An_Infinato* (2009), schematic
 - C6 *Regaining a Degree of Control* (2010), schematic / *Regaining a Degree of Control* (2010), schematic
 - C7 *Nightlight FM*, 2007, schematic
 - C8 *Electric Vacuum* (2011), schematic
 - D *Tescotrain (Homage to Guy Sherwin)*, (2011/12), schematic
- ④ *Untitled Song featuring Untitled Works by James Clarkson* (2012), mixed media
- ⑤ *Tescotrain (Homage to Guy Sherwin)* (2011-12), three TVs, two media players, Arduino, LEDs, relay
- ⑥ Resource area
- ⑦ Project Space: Suzanne Mooney, *The Edge of Collapse* (please turn over)

Suzanne Mooney
The Edge of Collapse



- ① *The Edge of Collapse No. 91* (2012), giclée print
- ② *Carving a Rock from a Stone* (2012), illustrations from the book *The Colour Guide to Familiar Minerals and Rocks*
- ③ *The Edge of Collapse No. 138* (2012), giclée print
- ④ *Proposition II* (2012), newsprint
- ⑤ *The Edge of Collapse No. 930* (2012), giclée print
- ⑥ *Equilateral Coercion IV* (2012), giclée print
- ⑦ *Equilateral Coercion III* (2012), giclée print
- ⑧ *Still life study No. 1* (2012), giclée print
- ⑨ *Still life study No. 2* (2012), giclée print
- ⑩ *Still life study No. 3* (2012), giclée print
- ⑪ *Still life study No. 4* (2012), giclée print
- ⑫ *Equilateral Coercion I* (2011), giclée print
- ⑬ *The Edge of Collapse No. 192* (2012), giclée print
- ⑭ *Proposition I* (2011), newsprint