

Spike Island

Open

Free entry
#SpikeIslandOpen

Friday 28 April
to Monday
1 May
2017





Inside Howard Silverman's studio 111

Spike Island Open 2017

Spike Island's annual Open event is a chance to explore behind the scenes of this former Brooke Bond tea packing factory, now home to over 70 artists' studios, Spike Print Studio, Fine Art BA/MA students from University of the West of England (UWE) and creative practitioners including designers, writers, filmmakers, animators and photographers. We are open all year round with a public programme of events, free entry exhibitions and a bustling café.

We hope you enjoy visiting these creative spaces and meeting the Spike Island community – don't be afraid to have a chat, ask questions, and tweet...

- p.4 Exhibitions
- p.6 Events
- p.7 Installations
- p.8 Floor Maps
- p.10 Activities
- p.12 Food and Drink
- p.13 Support Us
- p.14 Information
- p.16 Planner

#SpikeIslandOpen

 SpikeIsland

 @SpikeIsland

 @_SpikeIsland

Exhibitions

Giles Round

They bow. Curtain. No applause

► MAP: I

In Giles Round's exhibition, the artificial and the natural engage in a playful game of illusion. Interpretation, climate control, gallery furniture, lighting and signage are absurdly exaggerated from their usual supportive role to become content and narrative.

Exhibition continues until 18 June 2017.



Giles Round *They bow. Curtain. No applause.* (2017) Installation view, Spike Island. Photograph by Stuart Whipps



Andrea Luka Zimmerman *Estate, a Reverie* (2015) Production still

Andrea Luka Zimmerman *Common Ground*

► MAP: J

The work of Andrea Luka Zimmerman explores the impact of globalisation, power structures, militarism and denied histories. Central to her exhibition is the film *Estate, a Reverie* (2015) which tracks the long drawn out closure of the Haggerston Estate in East London and the utopian promise of social housing it once offered.

Exhibition continues until 18 June 2017.

Don't miss *(Un)Common*, a drop-in conversation with Andrea Luka Zimmerman on Saturday 29 April, 2–5pm (see p.6).

May Day May Day All Works Will Be Shown

Test Space

May Day May Day All Works Will Be Shown

► MAP: Z3

An open call photocopy show where all works responding to the title are shown, launched as part of Spike Island Open 2017.

Exhibition continues until 14 May 2017.

University of the West of England (UWE) Studios

Of the people, by the people, for the people

► MAP: L

UWE Fine Art students present a range of exhibitions and performances throughout the weekend. A set of curated spaces explore student responses to the current state of politics. Expect surprises...

See p.12 for UWE Studios' *Café-Bar Interconti* on Friday 28 April.



Nick Greenglass *The Lovers Decay*

Spike Print Studio exhibition

► MAP: Z

An exhibition of contemporary fine art prints, including textiles and wallpaper, produced by current Spike Print Studio members who work in varied styles and use different techniques.

Events

Opening night and party till late

► Map: T

Friday 28 April, doors from 6pm

Spike Island Open 2017 launches at 6pm. Be first to take a look around the studios, enjoy delicious food and drink, and dance till late in the sculpture yard with Disco Den DJs.



Andrea Luka Zimmerman *Estate, a Reverie* (2015) Production still

Sian Norris: Literary Salon

► Map: Z4

Saturday 29 April, 2.30–4.30pm

£3, book your place online or at reception

With guest poets and prose writers Amy Key, Ben Gwalchmai and Eley Williams

Join Spike Island's writer in residence Sian Norris in recreating the salon scene of 1920s Paris through a series of showcase events.

(Un)Common

► Map: J1

Saturday 29 April, 2–5pm

Drop in anytime

Andrea Luka Zimmerman hosts a drop in event with collaborators on her film *Estate, a Reverie*; David Roberts, Elam Forrester and Lorna Forrester. This event is taking place in Andrea Luka Zimmerman's exhibition, see p. 4.



Sarah Wilton Throw down

► Map: Z7

Sunday 30 April, 12.30–1pm

Watch studio holder Sarah Wilton throw a variety of unique vessels on a potter's wheel. Make your own artwork in her sessions on Saturday 29 April, see activities p.10.



Courtesy Gavin Strange

Talk: Gavin Strange, Do Fly

► Map: Z4

Monday 1 May, 2pm

Gavin Strange, a creative working by night under the name of JamFactory and by day, at Aardman Animations, chats about his book *Do Fly*, part of the Do Books series designed by Spike Island tenant Ratiotype (see p.7).

Installations

Harriet Bowman and Edward Penfold go on the Friday, come back Sunday

► Map: K

Bowman and Penfold's video installation features work filmed in an airport waiting lounge during a research residency in Fuerteventura (November 2016).



Ben Rowe *Lost in Time and Space; Beacon 51.4469/-2.6112* (2017)

Ben Rowe

► Map: V

Lost in Time and Space; Beacon 51.4469/-2.6112

Ben Rowe has created an unknowable structure, a beacon or signalling machine from another time and space.

Helen Grant Spring Break

► On board Bristol Ferry Boat 'Emily'

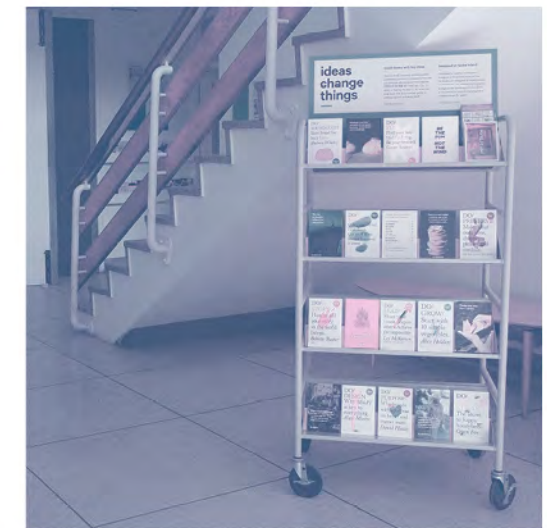
Saturday 29 April to Monday 1 May
(timetables available at reception)

Climb aboard a ferry boat to discover *Spring Break*, an installation of scatter cushions inspired by the signal flag alphabet. Passengers can spell out a nautical terms, create new anagrams, or just recline. A great way to travel to Spike Island (get off at the 'Marina' ferry stop.)

Spike Island Achievements Timeline

► Map: E

Find out about the many achievements of our internal community of artists, cultural tenants and students, staff and volunteers.



Courtesy Wilf Whitty

Ideas change things: Do Books trolley

► Map: H

The Do Book Company publish guidebooks for learning new skills (*Do Sourdough*) or finding a way to do what you love (*Do Fly*). The books are designed at Spike Island by Ratiotype, an independent graphic design studio founded by Wilf Whitty. Find a selection on display and for sale in reception.

Don't miss a talk by Gavin Strange, author of *Do Fly* on Monday 1 May, 2pm, see p.6.

Ground Floor



A	Stairs	Q	Sarah Wilton Vessel and Leaf Axils	32	Annabelle Craven-Jones
B	Lift	Q	Flavia Terzian <i>Let's Build a Wall</i>	33	Victoria Coombes
C	Toilets	T	Party in the sculpture yard	34	Anton Goldenstein
*	Reception	U	Raclette Raclette	35	Michael Hayter
D	Spike Island Café	V	Ben Rowe, <i>Lost in Time and Space; Beacon 51.4469/-2.6112</i>	36	Clawson & Ward
E	Achievements timeline	W	Art in Motion (AIM) <i>The Tea Service</i>	37	Rodney Harris
F1	Gopal's Curry Shack			38	Kate Parsons
F2	Outpost Coffee Cart			40	Patrick Haines
G	Whitchurch and Hengrove Community Orchard stall			41	Richard Hames
H	Ideas Change Things: Do Books trolley			42	Steve Joyce
I	Giles Round, <i>They bow. Curtain. No applause.</i>	19	Jo Lathwood	43	Ben Rowe
J	Andrea Luka Zimmerman, <i>Common Ground</i>	19	Katie Davies	44	Cathy Lewis
K	Harriet Bowman and Edward Penfold <i>go on the Friday, come back Sunday</i>	19	Conway and Young	45	Colin Higginson
L	UWE studios	21	Philippa Lawrence		
M	Café-Bar Interconti	22	Beth Carter		
N	Ping Pong	24	Simon Hood		
O	Spike Design 10th Anniversary	25	Seamus Staunton		
P	Conway and Young M_OTHER	26	Back in 5 Minutes Squad		
		27	Linda Brothwell		
		28	John Wood and Paul Harrison		
		29	Alexander Stevenson		
		30	Room 13 Hareclive		
		31	Alfie Kungu, Amy Gough and Benjamin Jones		

Off Site: On board Bristol Ferry Boat 'Emily'
Helen Grant *Spring Break*
(ask at reception for a timetable)

First Floor



A	Stairs	80	Éilis Kirby	105	Vic Moreton
B	Lift	81a	Milo Newman	106a	Niamh Collins
C	Toilets	81b	Natasha Rosling	106b	Maggie Royle
*	Reception	82	Hannah Murgatroyd	107	Joel Redman
X	Calling the Shots	83	Harriet Bowman	108.1	Sarah Wilton
Z	Spike Print Studio	84	Julian Claxton	108.1	Ben Tupper
Z1	Spike Print Studio: Print for £2	85	Nick Wright	108.1	Huma Mulji
Z2	Visual Storytelling Activity	91a	Clement Page	108.2	David Alesworth
Z3	Test Space	91b	Moirra Turner	109	Phil Toy
Z4	Sian Norris: Literary Salon	91c	Dani Landau	110a	Russell Oliver
Z4	Talk: Gavin Strange	92	Martyn Grimmer	110b	Ryan Oliver
Z5	Spike Associates, <i>To Tate and back again</i>	93	Emma Stibbon	111	Howard Silverman
Z5	Making it in the Creative Industries: Young Artists Share their Journeys	94a	Valda Jackson		
Z6	Big O Donut Co.	94b	Katy Connor and Stephen Cornford		
Z7	Sarah Wilton <i>Throw Down</i>	95	Shelley Davis		
		96	Mahali O'Hare		
		97	Matt Davies		
		98	Matt White		
		100	Vivienne Baker		
		101	Carol Jackman		
		102a	Peter Bobby		
		102b	Charlie Tweed		
		102c	Andrew Mania		
		103	Judy Rodrigues		
		104	Angela Lizon		

Activities



Image courtesy Room 13 Hareclive

Room 13 Hareclive

► Map: Studio 30 (ground floor)

Open throughout the weekend, with live reporting between 12–3.30pm

Room 13 Hareclive young artists and activists from Hartcliffe invite you to catch up with their roving reporter 'Felicia Wise' (2–3.30pm each day) and news studio-based anchor 'Peter Layman' (12–1.30pm each day) to help answer the question of the day...

Visual Storytelling with Spike Island Volunteers

► Map: Z2

Monday 1 May, 11am–4pm

Drop in anytime, materials provided

Taking inspiration from Andrea Luka Zimmerman's video *Merzschmerz* (2014) in her Spike Island exhibition (see p.4), use your creative skills to visually retell your own story or fairytale.

Sarah Wilton Vessel

► Map: Q

Saturday 29 April, 12–1pm

£3, limited to 15 participants

Book in advance at www.spikeisland.org.uk or via reception

Learn how to design and make your own clay vessel with studio holder Sarah Wilton.

Sarah Wilton *Leaf Axils*

► Map: Q

Saturday 29 April, 2–3pm

£3, limited to 15 places

Book in advance at www.spikeisland.org.uk or via reception

Experience the techniques used to create photographic works with studio holder Sarah Wilton. Paint, sculpt and scan forms inspired by botanicals and receive the work you make in an email.

Don't miss Sarah Wilton's demonstration *Throw Down*, Sunday 30 April, 12.30–1pm, p.6.

Spike Associates – to Tate and back again

► Map: Z5

Throughout the weekend

Take part in activities and conversations about art and ideas as part of an ongoing project by Spike Associates, recently part of Tate Exchange, London. Activities include creating collaborative drawings and ephemeral sculptures, while random interventions take place (see a full schedule on the blackboard inside the space).



Spike Print Studio, photograph by Max McClure

Print for £2

► Map: Z1

Saturday 29 April, 11am–1pm (limited spaces available)

Produce a small print to take home for just £2 with the aid of print technicians and artists in Spike Print Studio.

Flavia Terzian *Let's Build a Wall*

► Map: Q

Sunday 30 April and Monday 1 May, 11am–5pm, drop in anytime

Take part in a communal wall building exercise through the assembly of paper bricks with artist Flavia Terzian of Spike Associates.

Spike Design 10th Anniversary

► Map: O

Throughout the weekend, drop in anytime

We are celebrating 10 years of Spike Design, our affordable co-working space providing incubation and collaborative opportunities for creative businesses. Join us for a game of ping pong and hear stories of 150+ creative business tenants, past and present.



Conway and Young *M_OTHER* (2016)

Conway and Young *M_OTHER* (work in progress)

► Map: P

Throughout the weekend, drop in anytime

M_OTHER is a discussion about the otherness of motherhood, using cultural artefacts to explore 'other' understandings of motherhood, family and kinship.

Making it in the Creative Industries: Young Artists Share their Journeys

► Map: Z5

Saturday 29 April, 3–4.30pm

Enjoy short presentations by Rising's young artists, shedding light on challenges and successes, and networks they've tapped into for work or to set up their own creative businesses. Conversation and questions are encouraged! Rising is a not-for-

profit organisation supporting 16–25 year-olds with their creative ambitions, founded by studio holder Kamina Walton.

Whitchurch and Hengrove Community Orchard stall

► Map: G

Sunday 30 April, 11am–5pm

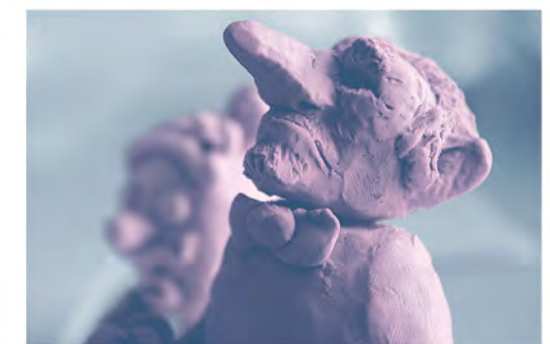
Join us for the launch of Holly Corfield Carr's new *Hengrove Wassail* composed by Tina Hitchens, sung by four Bristol based vocalists. This is a work in progress for a larger choral event in July 2017 devised by Freya Gabie. Hear about The Orchard's summer programme and try your hand at badge making with Ellen Wilkinson.

Art in Motion (AIM) *The Tea Service*

► Map: W

Listen to discussions on Saturday 29 April, 2–4pm, Sunday 30 April, 11am–12pm, and Monday 1 May, 2–4pm

Join the discussion on Sunday 30 April, 2–4pm
Artists from AIM launch their new touring installation; an interactive work combining art, tea and sharing ideas through discussion. Guests are invited to join the table to view and interact with their artwork while debating ideas. their artwork while debating ideas. AIM is a not for profit participatory arts organisation, established and led by artist Colin Higginson since 2013.



Courtesy Calling the Shots

Calling the Shots *Zoetropes and Plasticine*

► Map: X

Saturday 29 April, 11am–5pm

Grab some popcorn at the door, have a go at plasticine animation or make a zoetrope strip, and watch short films made by young people from across the South West inside Calling the Shots HQ.

Food and Drink

Experience delicacies cooked
up by some of Bristol's
best street food traders



Courtesy Gopal's Curry Shack

Gopal's Curry Shack

► Map: F1

Saturday 29 to Monday 1 May

Serving vibrant and creative vegetarian and vegan Indian-inspired street food with a seasonal British twist.

Big O Donut Co

► Map: Z6

Friday 28 April to Monday 1 May

Deliciously light donuts hand made in Bristol using local seasonal ingredients and Yeo Valley dairy, accompanied by Extract Coffee, milkshakes and more.

Raclette Raclette

► Map: U

Saturday 29 to Monday 1 May

A cheese-lovers dream! Big bubbling pans of freshly cooked tartiflette, and melted raclette cheese straight off the grill served with rosemary potatoes, locally grown salad and homemade pickles.



Spike Island Café, courtesy Eat Pictures

Outpost Coffee

► Map: F2

Saturday 29 to Monday 1 May

A coffee cart by Outpost – the independent coffee and vinyl venture based in Cardiff.

Café-Bar Interconti

► Map: M

Friday 28 April

Dine in style at the UWE Fine Art Café-Bar *Interconti*, inspired by all things international and the 30th anniversary of Martin Kippenberger's work *Model Interconti* (1987).

Spike Island Café

► Map: D

Throughout the weekend

Our very own Spike Island Café serve slow-roast pork rolls, spring vegetable chilli, childrens' healthy snack boxes and homemade pastries, plus many more organic treats (and an ice cream trike outside.)

Support Us



Rodney Harris' studio 37 (2016) Photograph by Max McClure

Donate

Spike Island is a registered charity (no.1003505) working to nurture artistic talent and bring artists and audiences together. Your gift, via our website or at one of our donations boxes, supports free entry to exhibitions, educational activities, subsidised studios and artists' development.
www.spikeisland.org.uk/support

Volunteer

Join our dynamic team of volunteers and make a significant contribution to the work we do, while gaining valuable work experience within the arts. Apply online at
www.spikeisland.org.uk/opportunities



Supported using public funding by
**ARTS COUNCIL
ENGLAND**



Supported using public funding by
**ARTS COUNCIL
ENGLAND**



**HAUSER & WIRTH
SOMERSET**

Information

Spike Island is also home to:

Spike Film and Video

Spike Film and Video provides specialist exhibition, production and post-production services to the art and heritage sectors and high specification equipment hire with expert support.
www.spikeisland.org.uk/spike-film-and-video

Spike Design

Spike Design offers affordable co-working space and support for a range of creative businesses.
www.spikeisland.org.uk/spike-design

Spike Associates

Spike Associates is a membership network of over 130 artists, writers, curators, designers and other creative practitioners.
www.spikeisland.org.uk/spike-associates

Cultural tenants

Over 20 creative companies and contemporary arts organisations are based in Spike Island.
www.spikeisland.org.uk/office-space

University of the West of England (UWE) City Campus

Spike Island is part of UWE'S City Campus; the University's creative and cultural industries campus and studio spaces in Bristol city centre.
www.uwe.ac.uk

Cover images (from top):

Image courtesy Sarah Wilton

Spike Print Studio, photograph by Alessandra Sormani

Visitor information

Spike Island

133 Cumberland, Bristol BS1 6UX
Tel. 0117 929 2266
www.spikeisland.org.uk
admin@spikeisland.org.uk
f Spikeland
t @_Spikeland
@ @Spikeland

Mailing list

Sign up to receive our monthly e-newsletter via reception or online at www.spikeisland.org.uk/mailling-list

Parking meters are in operation in the area. A pay and display car park is also available just off Gas Ferry Road. Spike Island aims to be a fully accessible building. There are three Blue Badge parking spaces outside the main entrance.

Bristol Ferry Boats

Take advantage of £1 tickets from the city centre to Spike Island (use the 'Marina' stop) throughout Spike Island Open, 28 April to 1 May 2017. Encounter artwork on board ferry boat 'Emily' as part of Spike Island Open (see p.7).

Number Seven Boats

A service operates cross-harbour (SS Great Britain — Capricorn Quay — New Harbour Inlet). Tickets are 90p for a single journey.

Bristol Insight Open Top Buses

Take advantage of £1 fixed price tickets from Stop 1 (Explore Lane, Millennium Square) to Stop 3 (Spike Island) throughout Spike Island Open, 28 April to 1 May 2017.



Inside Rodney Harris' studio 37, works in progress

Planner

All events and activities are free unless otherwise stated.

Friday 28 April

- 6–9pm Opening night
- 9pm–late Party in the sculpture yard with Disco Den DJs

Saturday 29 April

- 11am–5pm Calling the Shots: Zoetropes and Plasticine
- 11am–1pm Spike Print Studio: Print for £2
- 12–1pm Sarah Wilton *Vessel*
- 2–3pm Sarah Wilton *Leaf Axils*
- 2–5pm Discussion: Andrea Luka Zimmerman *(Un)Common*
- 2–4pm Discussion: Art in Motion (AIM) *The Tea Service*
- 2.30–4.30pm Sian Norris: Literary Salon
- 3–4.30pm Making it in the Creative Industries: Young Artists Share their Journeys



Valda Jackson, *Studio 94a* (2017) Photograph by Davina Steingold



Spike Associates at Tate Exchange (2017)

Sunday 30 April

- 11am–5pm Whitchurch and Hengrove Community Orchard stall
- 11am–5pm Flavia Terzian *Let's Build a Wall*
- 11am–12pm Discussion: Art in Motion (AIM) *The Tea Service*
- 2–4pm Discussion: Art in Motion (AIM) *The Tea Service*
- 12.30–1pm Sarah Wilton *Throw down*
- 3–4pm Holly Corfield Carr, Freya Gabie and Tina Hitchens *Hengrove Wassail*

Monday 1 May

- 11am–5pm Flavia Terzian *Let's Build a Wall*
- 11am–4pm Visual Storytelling with Spike Island Volunteers
- 11am–12pm Discussion: Art in Motion (AIM) *The Tea Service*
- 2–2.45pm Talk: Gavin Strange, *Do Fly*